

Mews

The Evolution of the Work Landscape

boss

Mews

From Boss Design



We used to rely on architectural intervention to divide spaces and define privacy, the new workplace landscape has shifted to habitable spaces with high levels of function and flexibility. But we need more. Spaces that not only work well but make us feel good too.

Positive Spaces⁺



Discover your natural habitat in the new work landscape



It's clear that remote and hybrid working is here to stay. Whilst some workers will gradually find their way back to in-person workplace settings, this is just the beginning of working from anywhere for many others. Research by LifeSize states that video meetings improve productivity by 50%, and 90% of people find it easier to get their point across (76% of us using

video conferencing for remote work). These permanently hybrid and remote teams need the space and tools to communicate and collaborate just as effectively and perhaps more frequently than before. The Mews landscape habitats are designed to fulfil the needs of the modern workplace.

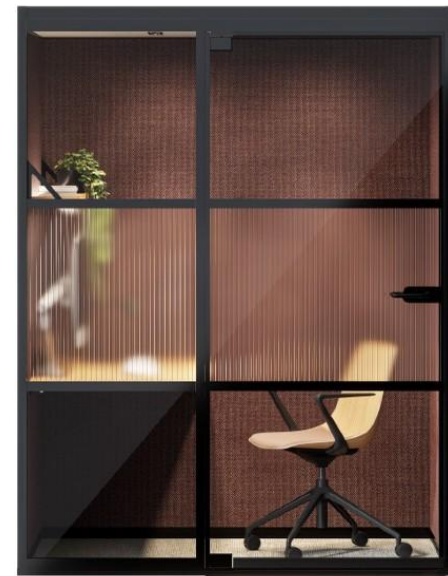
Mews enhances the ergonomics of your space through air quality, temperature and lighting to create habitats that improve the quality of work, connection, and collaboration.

Mews

Collection



Mews Dial
Telephone Pod



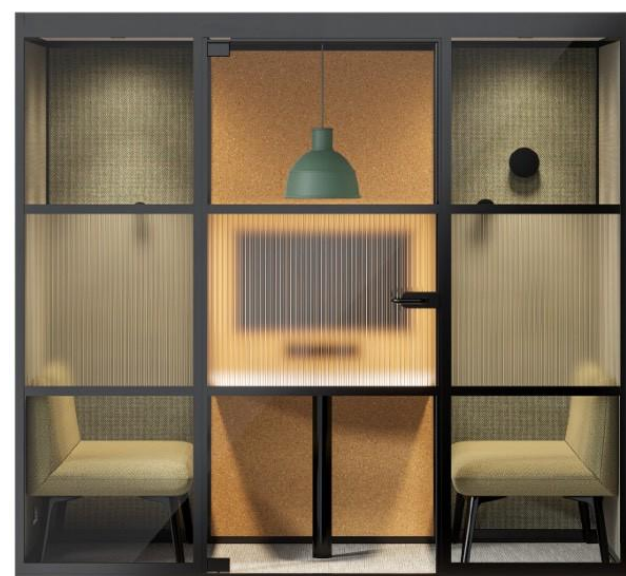
Mews Brief
Focus Pod



Mews Focus
Focus Pod



Mews Collaborate
Curtain Screen



Mews Connect
Pod



Mews Connect XL
Pod



Mews Connect
Open Pod



Mews Connect XL
Open Pod

Mews

Plus



Mews Huddle
Formal Meeting Pod



Mews Lounge
Open Configuration Pod



Mews Forum
Group Meeting Pod



Mews Summit
Large meeting/Conference Pod

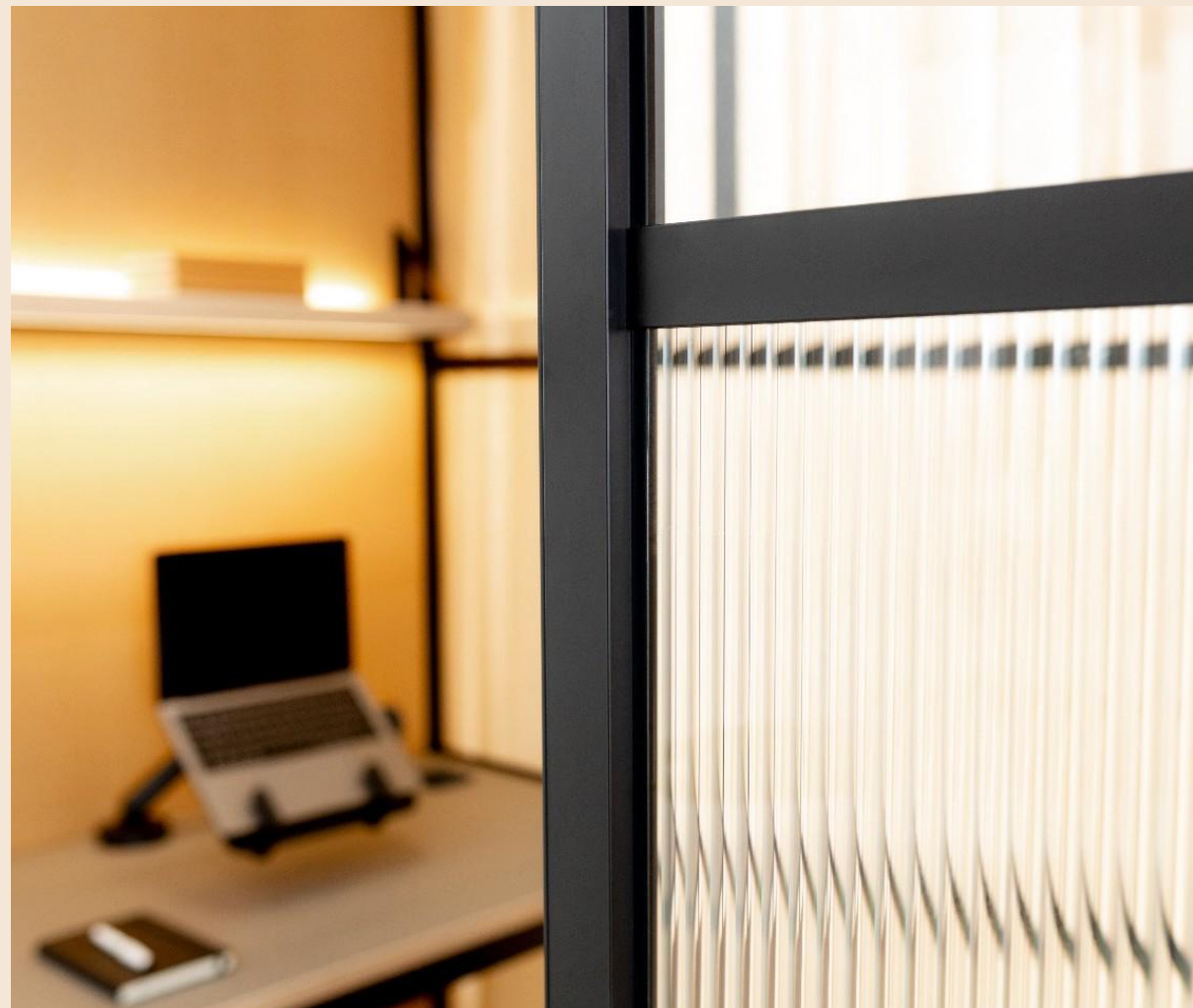


Mews

Focus

A quiet space designed for visual and acoustic privacy. Lighting modes created for video conferencing and prolonged pieces of work with ventilation that maintains comfortable temperature and quality of air.





Lighting Design

Video Conferencing



Lighting

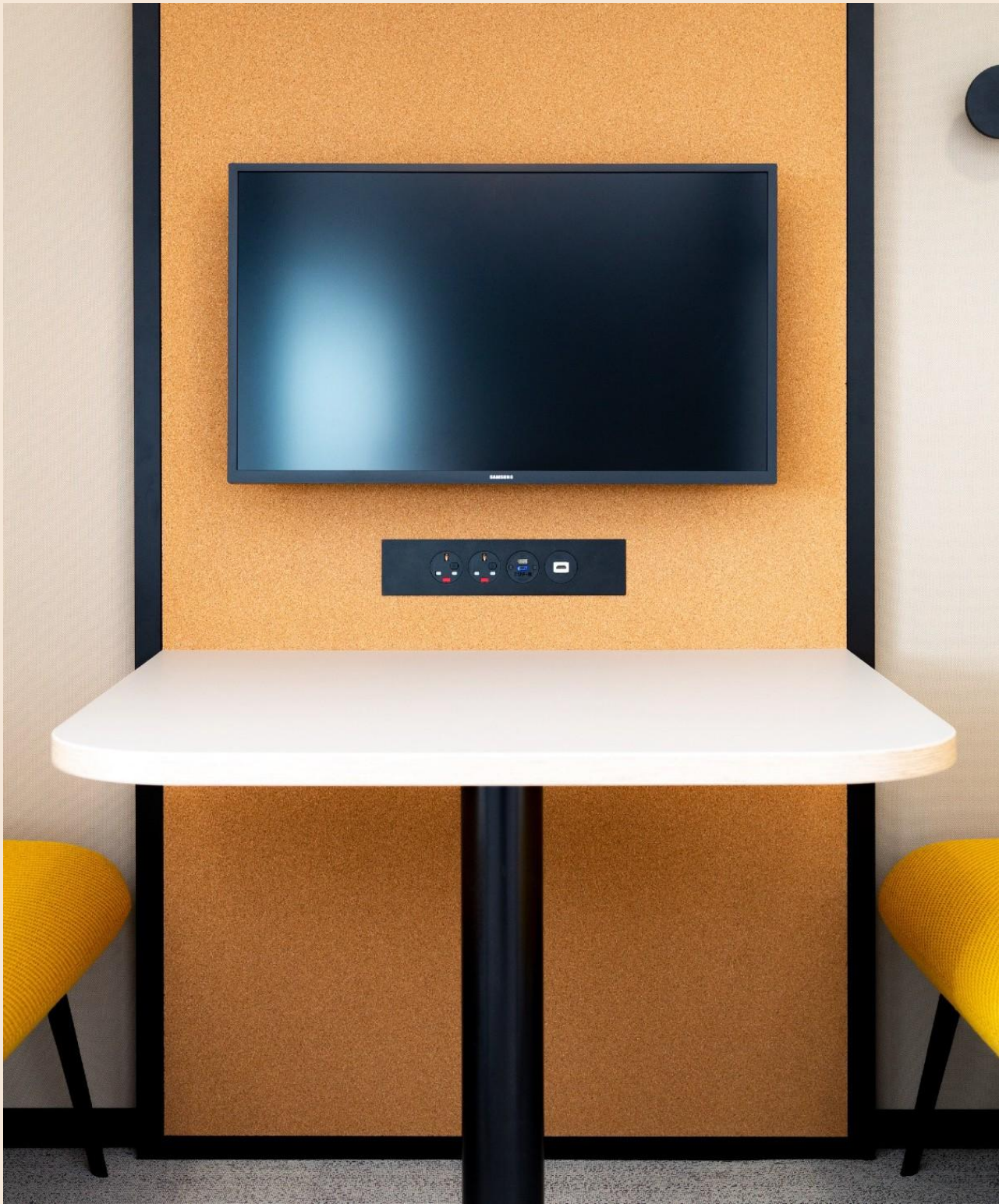
We've all become highly conscious of how we appear on camera, from the moment we log into a video call to when we catch a glimpse of ourselves on the attendee screen. Maintaining that human connection is essential for gauging responses and improving our understanding of conversations. Creating a flattering environment not only boosts confidence but also projects the right message for your brand. Key elements to control for a complimentary video conferencing experience include lighting, color, shape, and texture.

The video conferencing (VC) lighting system is designed to create "loop lighting," which subtly highlights the face by casting a small shadow from the nose onto the cheeks while avoiding dark shadows around the eyes. The light source is positioned slightly above eye level and angled 30-45 degrees from the camera, bouncing light off the back wall to create a diffused, soft illumination across the face. A rear downlight against the back wall adds a flattering halo effect around the head, enhancing contrast and definition.

While your Focus pod can be upholstered in any color, we recommend using natural tones for the desk wall to reflect flattering light onto the face. Incorporating subtle textures can add visual interest while also enhancing privacy for your video conferencing environment.

Ergonomics

Comfort & Performance



Air Quality & Temperature

Our new ventilation system allows fresh air to be drawn in - hot air extracted out. All pods are also set to deliver at least 12 air changes per hour as a ‘nominal’ setting. Providing quality air flow and a stimulating atmosphere whilst maintaining the ambient temperature. Not available in Mews Open Connect.

Acoustics

Mews offers high levels of acoustic insulation, achieved through innovative sound absorbent wall panels - disconnecting you from the wider environment to focus, and providing acoustic privacy for calls.

Connectivity

Power to recharge USB A+C with HDMI connectivity to a screen (recommended size 32”).

Tables

Standard tables have rounded corners to maximise on space.

Accessibility

Mews can be specified without a floor to allow easier access for users who may struggle with steps (requires bolt down kit)

Mews Airflow (PIR Operated)

| | Airflow unit (dB at table) | Airflow m3/hr | ACH - number of air changes per hour* |
|-----------------|-------------------------------|-----------------|--|
| | | | |
| Focus | 48 | 5,650ft³/hr | 17 |
| Dial | 40 | 5,156ft³/hr | 37 |
| Brief | 48 | 5,650ft³/hr | 23 |
| Connect | 48 | 5,650ft³/hr | 17 |
| Open | N/A | N/A | N/A |
| Connect XL | 50 | 12,360ft³/hr | 15 |
| Open XL | N/A | N/A | N/A |
| Huddle & Lounge | 50 | 12,360.15ft³/hr | 10 |
| Forum | 50 | 12,360.15ft³/hr | 14 |
| Summit | 50 | 12,360.15ft³/hr | 14 |

Ergonomics

Acoustic Rating



Mews Acoustic Test Results

| | | |
|---------|--|------|
| Focus | Solid Rear Panel – Glazed | 33dB |
| | Solid Rear Panel – Enhanced Glazing | 34dB |
| | End with glazed whiteboard attached | 33dB |
| | Door Side | 31dB |
| | End (no glazed whiteboard) | 31dB |
| | | |
| Connect | Solid End Panel – Not Glazed | 31dB |
| | Solid Side Panel | 32dB |
| | Door Side | 31dB |
| | End (fitted with solid wooden parquet style panel) | 33dB |

Notes
Measured Sound Insulation Measured @ 2m
Both pods had a 3mm rubber damping membrane fitted across the roof.

Mews Acoustic Methodology

Testing has been to establish the dB value from inside the various configurations for the Focus and Connect Pod to a point 2m outside, indicative of a closest seating position within an open plan office setting. The dB is the weighted level difference, weighted in accordance with BS EN ISO 717-1:1997 ‘Acoustics. Rating of sound insulation in buildings and of building elements. Airborne sound insulation’. Measurements have been taken in general accordance with BS EN ISO 140-4:1998 ‘Acoustics. Measurement of sound insulation in buildings and of building elements. Field measurements of airborne sound insulation between rooms’.



Mews

Connect

A meeting space designed for visual and acoustic privacy. Controllable lighting creates a softer space to focus and share ideas, and ventilation maintains a comfortable temperature and quality of air over longer periods.







Mews Connect XL
With double Hemm sofas



boss



Inclusive Spaces with Mews

ADA Friendly Environments

We believe that workspaces should accommodate the diverse needs of all employees, enhancing both comfort and productivity. The Mews collection is designed with inclusivity in mind, offering flexibility and adaptability to create ADA-compliant environments that cater to a wide range of disabilities, including mobility impairments, visual and hearing disabilities, and cognitive or sensory challenges.

To the Americans with Disabilities Act guidelines, Mews pods are available without floors to eliminate thresholds, making them wheelchair accessible. Additionally, they can be specified with small, easily accessible tables, providing ample space for those using mobility aids. We understand that every workplace is unique, and Mews pods can be tailored to suit specific requirements, ensuring the space is functional for all employees.

By embracing inclusive design principles, Mews ensures that all individuals—regardless of ability—can engage meaningfully with their workspace, making it a valuable component in hybrid office models that prioritize both flexibility and accessibility.



Mews Connect XL

ADA Compliance Check List

Here is a list of key ADA (Americans with Disabilities Act) requirements that should be considered when specifying pods to ensure they are accessible:

1. Clear Floor Space: Ensure there is sufficient clear floor space for wheelchairs, typically 30 inches by 48 inches minimum, to allow for easy manoeuvring.

2. Door Width: Doors must be at least 32 inches wide to accommodate wheelchair access when open at 90 degrees.

3. Turning Space: Provide adequate turning space, which requires a circular space with a minimum diameter of 60 inches for a wheelchair to turn around comfortably.

4. Thresholds and Ramps: Thresholds should not exceed 1/2 inch in height, and ramps should have a slope no greater than 1:12.

5. Reach Ranges: Controls and operable parts, such as light switches and thermostats, must be within accessible reach ranges (15 to 48 inches above the floor for forward reach and 9 to 54 inches above the floor for side reach).

6. Seating: Provide accessible seating options within the pod, with at least one seat accommodating a person in a wheelchair.

7. Height of Work Surfaces: Work surfaces or tables should be 28-34 inches high to accommodate wheelchair users.

8. Knee and Toe Clearance: Ensure there is sufficient knee and toe clearance under work surfaces for wheelchair users (27 inches high, 30 inches wide, and 19 inches deep).

9. Controls and Operating Mechanisms: All controls (e.g., light switches, power outlets) should be easily operable with one hand and without tight grasping, pinching, or twisting of the wrist.

10. Visual and Audible Alarms: Pods should be equipped with both visual and audible alarms for emergencies to cater to individuals with hearing or vision impairments.

11. Lighting: Adequate lighting levels should be provided to ensure the pod is well-lit for individuals with visual impairments.

Mews

Connect Open

An informal meeting space designed for keeping in touch with your space and people around you. The slatted ceiling creates an open, well lit space with different levels of attachment.





Mews

Collaborate

The space around the pods, delineated by curtains on the Mews grid system, creates spaces perfect for collaboration and informal lounge settings.



Mews

Plus

The increased statement of line available as Mews Plus, demonstrates the wide configuration options and modularity of the system, adding in both larger and more formal meeting space solutions



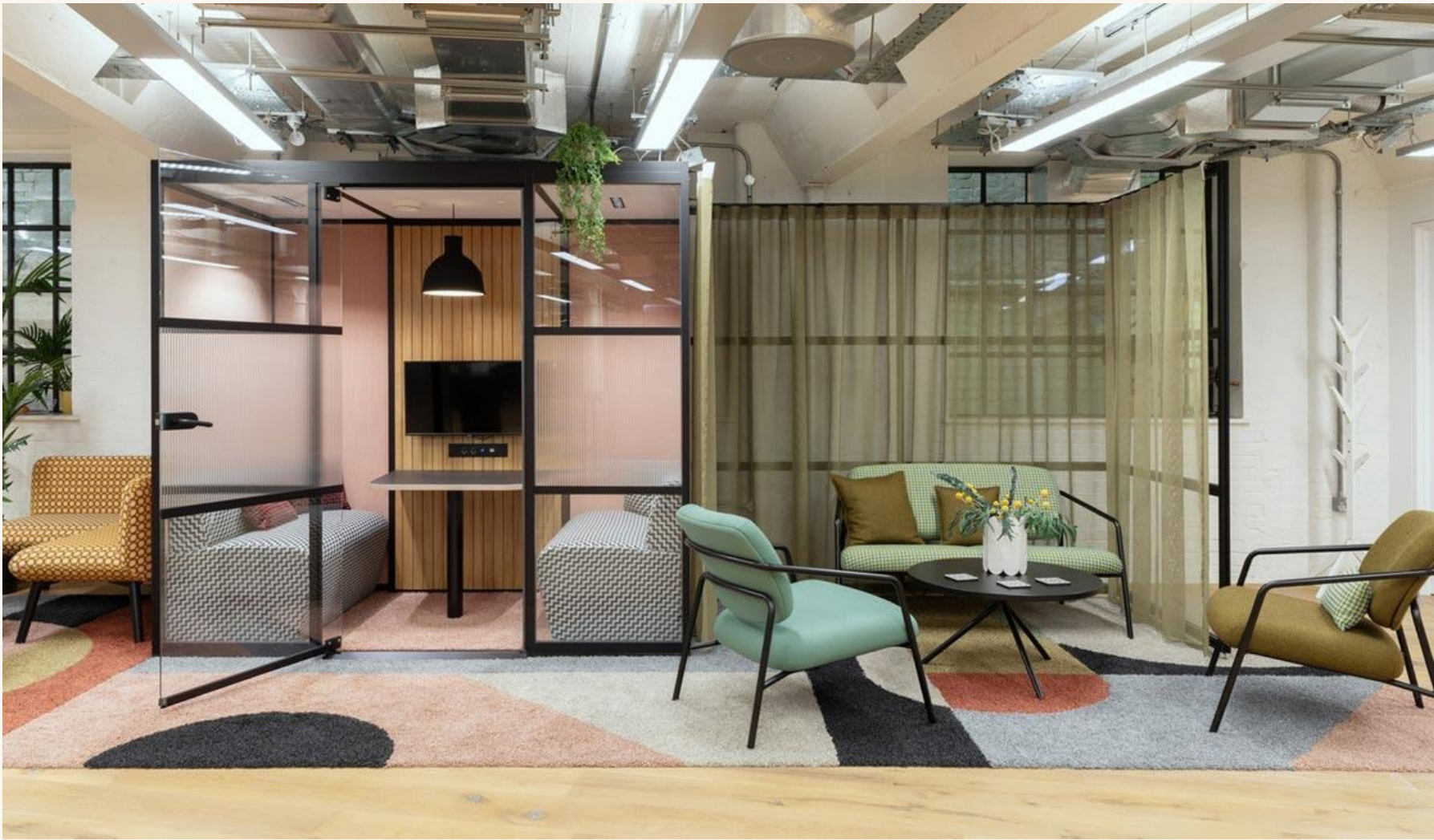


Mews

In Details

boss

Versatile & Customizable



Materiality & Texture



Features



Finishes

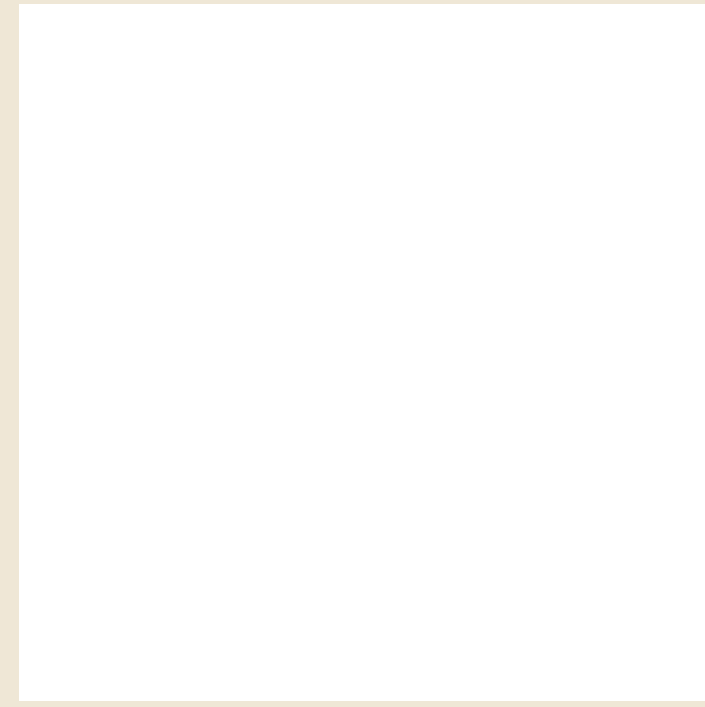
Panels & Cladding



Fluted Oak



Cork Panel



White Board



Custom Options Available

9 Reasons Why Mews?

- Increased need for private video conferencing and focus space.
- Effective use of social spaces around the pods.
- Comfortable proportions for users from a compact footprint.
- Simple to specify and plan.
- Easy to 'hack' and make stylish and unique configurations.
- Diverse modules to build landscapes perfect for the users needs.
- Specification easily updated and modified
- Acoustic & visual privacy
- Environmentally sound construction

Mews

Product Partners

boss

Mews

Product Partners



Paloma



Ola



Sia



Myriad
Mews Version



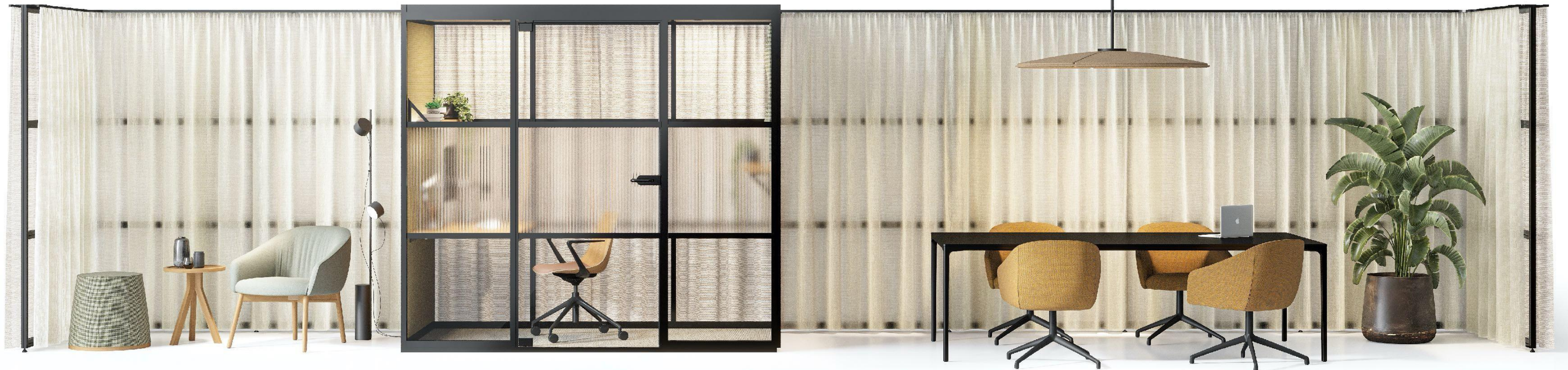
Hemm
Mews Version



Reef
Mews Version

Mews

From Boss Design



A destination space for a new era.