

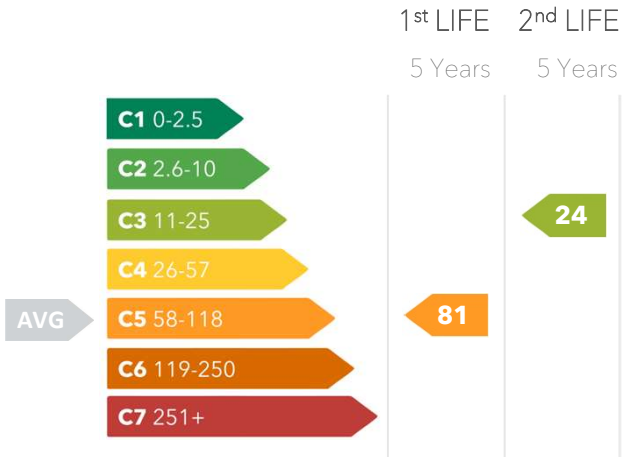


PRODUCT PROFILE

dc Certificate	101359
Verification date	10.02.2025
Manufacturer	Boss Design
Product name	Mews Brief
Production no.	Mews Brief
Production	UK
Weight	314.85 kg



CARBON EFFICIENCY



Carbon footprint	877.87 kg CO <sub>2</sub> e
Life	5 years
Footprint	2.18 m <sup>2</sup>
kg CO <sub>2</sub> e/Life/m <sup>2</sup>	80.54 kg CO <sub>2</sub> e
Category	Acoustic Pod

CARBON FOOTPRINT

Materials	Sourcing	Production	Distribution	End of Life	Total
741.65kg	1.30kg	16.18kg	8.50kg	110.24kg	877.87kg
84.48%	0.15%	1.84%	0.97%	12.56%	

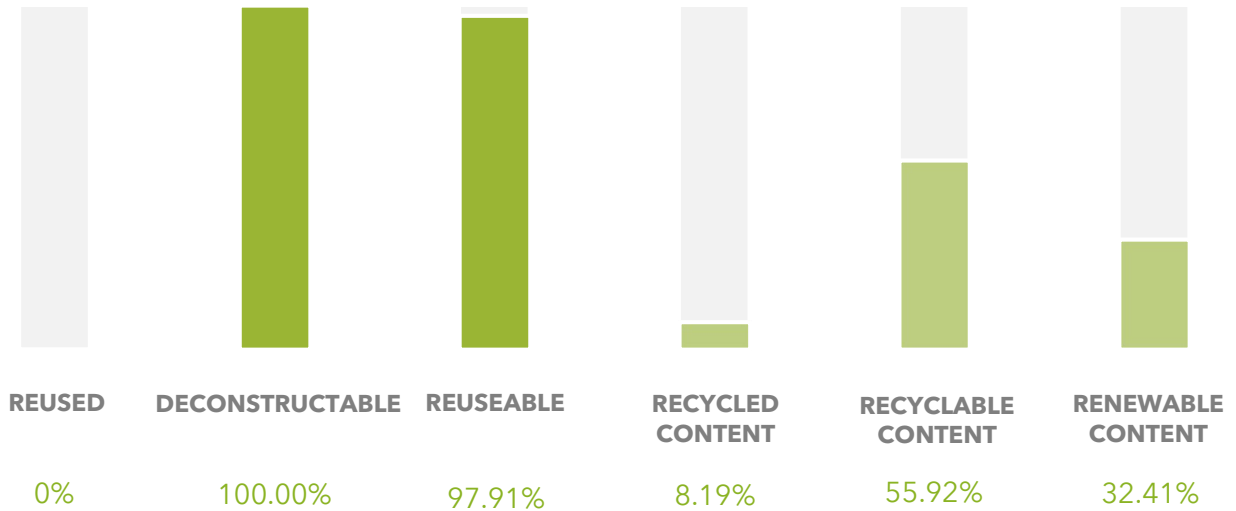
DECLARATION

This certificate represents a third-party assessment conducted per the Product Carbon Footprint assessment methodology, aligned with the Greenhouse Gas (GHG) Protocol Product Life Cycle Accounting and Reporting and ISO 14067 standards. The assessment is based upon independently published third-party data, Environmental Product Declarations and manufacturers' data for the product code listed and is valid for three years from validation. This certificate is marketed as a Circular Design Certificate and should be used to report the application of circular design application as set out in the dc Circular Design Guide. For further details and guidance on this certificate, please visit [www.designconformity.com](http://www.designconformity.com).



# CIRCULAR DESIGN CERTIFICATE

## DESIGN CIRCULARITY - PRODUCT COMPONENTS



## ENVIRONMENTAL IMPACT - MATERIALS

PRODUCT MATERIAL	WEIGHT (kg)	% OF CO <sub>2</sub> e	% OF WATER	RECYCLED CONTENT (%)	END OF LIFE ROUTE
PC Aluminium	49.85	42	2	30	Reuse
Glass	112.80	16	26	0	Reuse
MDF	112.26	12	58	0	Reuse
Electronics	1.58	11	2	0	Recycle
PU Foam	12.70	9	5	0	Reuse
Cables	5.00	4	4	0	Recycle
Steel	6.72	2	1	56	Reuse
Grind 130 Tiles	10.88	2	1	0	Reuse

PACKAGING MATERIAL	WEIGHT (kg)	% OF CO <sub>2</sub> e	% OF WATER	RECYCLED CONTENT (%)	END OF LIFE ROUTE
Cardboard	5	5	3	80	Recycle
LDPE	1	1	1	0	Landfill
Pallet	12	94	96	0	Reuse



101359

## BOSS DESIGN

Mews Brief

### CARBON EFFICIENCY RATING



Carbon Footprint per functional unit

**877.87 kg CO<sub>2</sub>e**



RECYCLED CONTENT

**8%**



DECONSTRUCTABLE

**100%**



REUSABLE

**98%**



101359

2<sup>ND</sup> LIFE 1<sup>ST</sup> LIFE

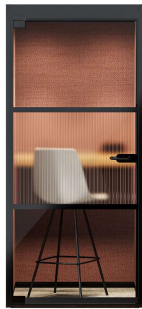
**C5**

**C3**

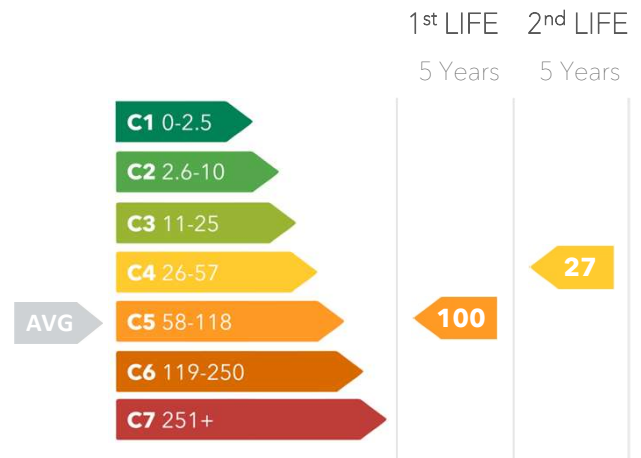


## PRODUCT PROFILE

dc Certificate	101360
Verification date	10.02.2025
Manufacturer	Boss Design
Product name	Mews Dial
Production no.	Mews Dial
Production	UK
Weight	215.14 kg



## CARBON EFFICIENCY



<b>Carbon footprint</b>	<b>643.40 kg CO<sub>2</sub>e</b>
Life	5 years
Footprint	1.29 m <sup>2</sup>
kg CO <sub>2</sub> e/Life/m <sup>2</sup>	99.75 kg CO <sub>2</sub> e
Category	Acoustic Pod

## CARBON FOOTPRINT

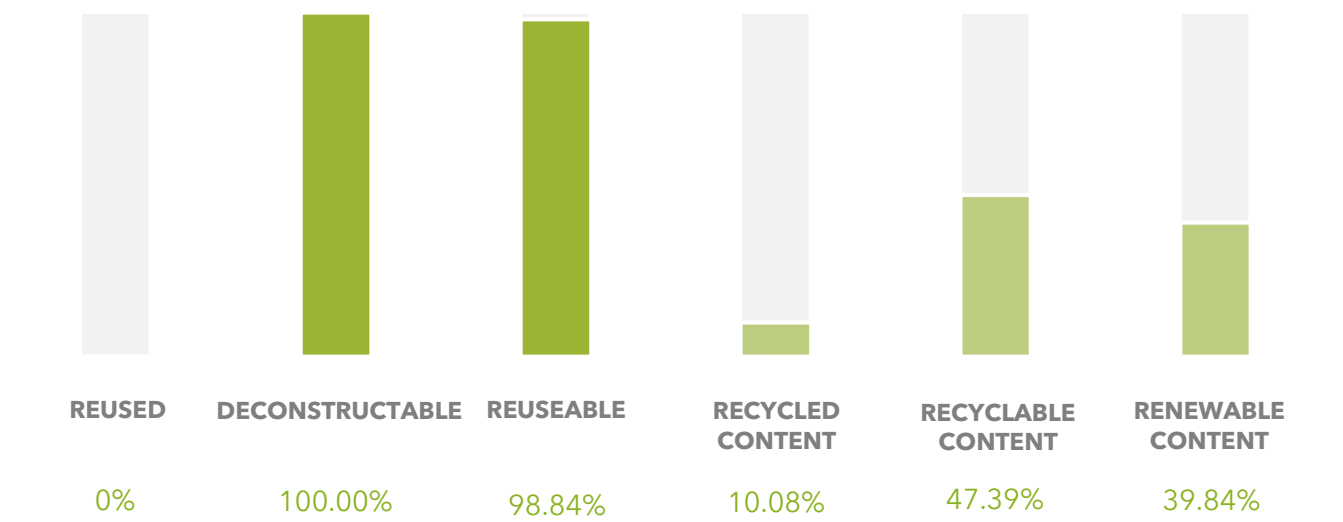
<b>Materials</b>	<b>Sourcing</b>	<b>Production</b>	<b>Distribution</b>	<b>End of Life</b>	<b>Total</b>
539.10kg	1.07kg	11.04kg	5.81kg	86.38kg	<b>643.40kg</b>
83.79%	0.17%	1.72%	0.90%	13.42%	

## DECLARATION

This certificate represents a third-party assessment conducted per the Product Carbon Footprint assessment methodology, aligned with the Greenhouse Gas (GHG) Protocol Product Life Cycle Accounting and Reporting and ISO 14067 standards. The assessment is based upon independently published third-party data, Environmental Product Declarations and manufacturers' data for the product code listed and is valid for three years from validation. This certificate is marketed as a Circular Design Certificate and should be used to report the application of circular design application as set out in the dc Circular Design Guide. For further details and guidance on this certificate, please visit [www.designconformity.com](http://www.designconformity.com).



DESIGN CIRCULARITY - PRODUCT COMPONENTS



ENVIRONMENTAL IMPACT - MATERIALS

PRODUCT MATERIAL	WEIGHT (kg)	% OF CO <sub>2</sub> e	% OF WATER	RECYCLED CONTENT (%)	END OF LIFE ROUTE
PC Aluminium	35.37	41	2	30	Reuse
MDF	95.23	14	68	0	Reuse
PET	18.20	11	10	0	Reuse
Electronics	1.01	9	2	0	Recycle
Glass	40.00	8	13	0	Reuse
Aluminium	5.33	4	0	63	Reuse
Steel	6.66	3	1	56	Reuse
Cables	1.50	2	2	0	Recycle

PACKAGING MATERIAL	WEIGHT (kg)	% OF CO <sub>2</sub> e	% OF WATER	RECYCLED CONTENT (%)	END OF LIFE ROUTE
Cardboard	5	5	3	80	Recycle
LDPE	1	1	1	0	Landfill
Pallet	12	94	96	0	Reuse



101360

## BOSS DESIGN

Mews Dial

### CARBON EFFICIENCY RATING



Carbon Footprint per functional unit

**643.40 kg CO<sub>2</sub>e**



RECYCLED CONTENT

**10%**



DECONSTRUCTABLE

**100%**



REUSABLE

**99%**



101360

2<sup>ND</sup> LIFE 1<sup>ST</sup> LIFE

**C5**

**C4**

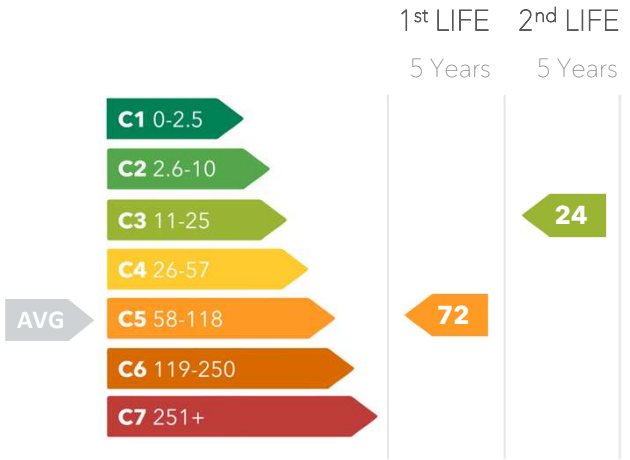


PRODUCT PROFILE

dc Certificate	101361
Verification date	10.02.2025
Manufacturer	Boss Design
Product name	Mews Focus
Production no.	Mews Focus
Production	UK
Weight	383.65 kg



CARBON EFFICIENCY



Carbon footprint	1101.31 kg CO <sub>2</sub> e
Life	5 years
Footprint	3.07 m <sup>2</sup>
kg CO <sub>2</sub> e/Life/m <sup>2</sup>	71.75 kg CO <sub>2</sub> e
Category	Acoustic Pod

CARBON FOOTPRINT

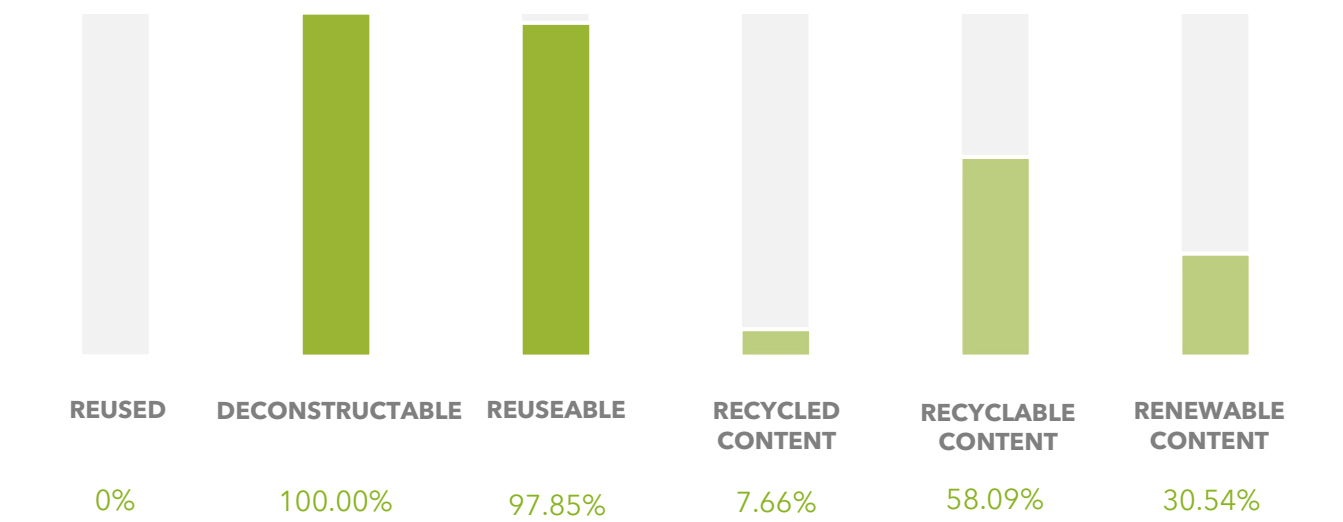
Materials	Sourcing	Production	Distribution	End of Life	Total
940.85kg	1.42kg	19.68kg	10.36kg	129.00kg	1101.31kg
85.43%	0.13%	1.79%	0.94%	11.71%	

DECLARATION

This certificate represents a third-party assessment conducted per the Product Carbon Footprint assessment methodology, aligned with the Greenhouse Gas (GHG) Protocol Product Life Cycle Accounting and Reporting and ISO 14067 standards. The assessment is based upon independently published third-party data, Environmental Product Declarations and manufacturers' data for the product code listed and is valid for three years from validation. This certificate is marketed as a Circular Design Certificate and should be used to report the application of circular design application as set out in the dc Circular Design Guide. For further details and guidance on this certificate, please visit [www.designconformity.com](http://www.designconformity.com).



DESIGN CIRCULARITY - PRODUCT COMPONENTS



ENVIRONMENTAL IMPACT - MATERIALS

PRODUCT MATERIAL	WEIGHT (kg)	% OF CO <sub>2</sub> e	% OF WATER	RECYCLED CONTENT (%)	END OF LIFE ROUTE
PC Aluminium	55.09	37	2	30	Reuse
Glass	150.50	17	29	0	Reuse
Electronics	3.24	17	3	0	Recycle
MDF	129.02	11	55	0	Reuse
PU Foam	16.40	9	5	0	Reuse
Cables	5.00	3	3	0	Recycle
Steel	10.08	2	1	56	Reuse
Grind 130 Tile	10.78	2	1	0	Reuse

PACKAGING MATERIAL	WEIGHT (kg)	% OF CO <sub>2</sub> e	% OF WATER	RECYCLED CONTENT (%)	END OF LIFE ROUTE
Cardboard	5	5	3	80	Recycle
LDPE	1	1	1	0	Landfill
Pallet	12	94	96	0	Reuse





101361

## BOSS DESIGN

Mews Focus

### CARBON EFFICIENCY RATING



Carbon Footprint per functional unit  
**1101.31 kg CO<sub>2</sub>e**



RECYCLED CONTENT

**8%**



DECONSTRUCTABLE

**100%**



REUSABLE

**98%**



101361

2<sup>ND</sup> LIFE 1<sup>ST</sup> LIFE

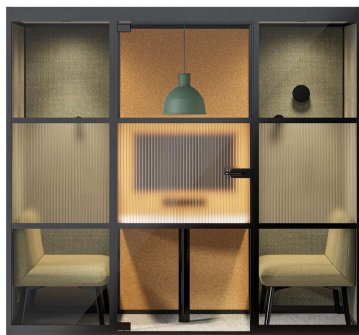
**C5**

**C3**

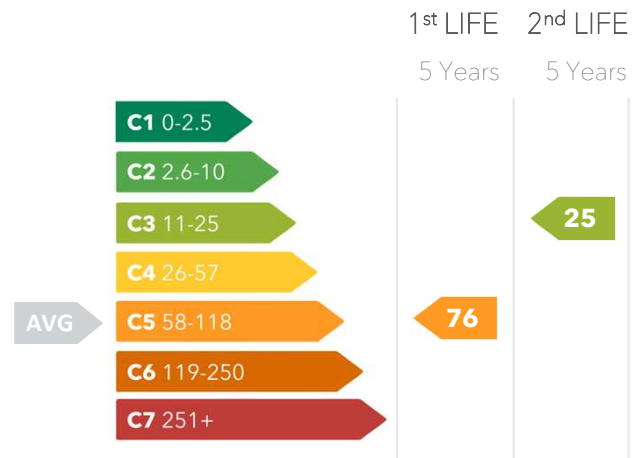


## PRODUCT PROFILE

dc Certificate	101362
Verification date	10.02.2025
Manufacturer	Boss Design
Product name	Mews Connect
Production no.	Mews Connect
Production	UK
Weight	370.10 kg



## CARBON EFFICIENCY



Carbon footprint	1166.11 kg CO <sub>2</sub> e
Life	5 years
Footprint	3.08 m <sup>2</sup>
kg CO <sub>2</sub> e/Life/m <sup>2</sup>	75.72 kg CO <sub>2</sub> e
Category	Acoustic Pod

## CARBON FOOTPRINT

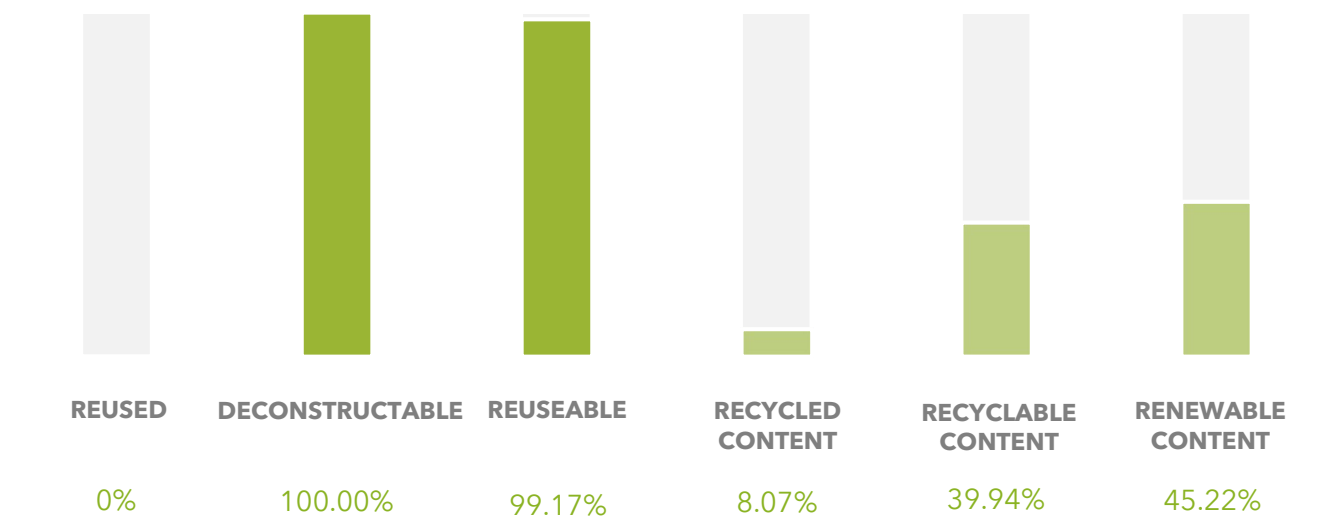
Materials	Sourcing	Production	Distribution	End of Life	Total
955.40kg	1.58kg	18.99kg	9.99kg	180.15kg	1166.11kg
81.93%	0.14%	1.63%	0.86%	15.45%	

## DECLARATION

This certificate represents a third-party assessment conducted per the Product Carbon Footprint assessment methodology, aligned with the Greenhouse Gas (GHG) Protocol Product Life Cycle Accounting and Reporting and ISO 14067 standards. The assessment is based upon independently published third-party data, Environmental Product Declarations and manufacturers' data for the product code listed and is valid for three years from validation. This certificate is marketed as a Circular Design Certificate and should be used to report the application of circular design application as set out in the dc Circular Design Guide. For further details and guidance on this certificate, please visit [www.designconformity.com](http://www.designconformity.com).



DESIGN CIRCULARITY - PRODUCT COMPONENTS



ENVIRONMENTAL IMPACT - MATERIALS

PRODUCT MATERIAL	WEIGHT (kg)	% OF CO <sub>2</sub> e	% OF WATER	RECYCLED CONTENT (%)	END OF LIFE ROUTE
PC Aluminium	66.29	44	2	30	Reuse
MDF	181.33	16	74	0	Reuse
Electronics	3.08	16	3	0	Recycle
PU Foam	21.79	12	6	0	Reuse
Glass	75.00	8	13	0	Reuse
Grind 130 Tile	10.78	2	0	0	Reuse
Steel	5.85	1	1	56	Reuse
Camira Lucia	0.675	0	0	100	Reuse

PACKAGING MATERIAL	WEIGHT (kg)	% OF CO <sub>2</sub> e	% OF WATER	RECYCLED CONTENT (%)	END OF LIFE ROUTE
Cardboard	5	5	3	80	Recycle
LDPE	1	1	1	0	Landfill
Pallet	12	94	96	0	Reuse



101362

## BOSS DESIGN

Mews Connect

### CARBON EFFICIENCY RATING



Carbon Footprint per functional unit  
**1166.11 kg CO<sub>2</sub>e**



RECYCLED CONTENT

**8%**



DECONSTRUCTABLE

**100%**



REUSABLE

**99%**



101362

2<sup>ND</sup> LIFE 1<sup>ST</sup> LIFE

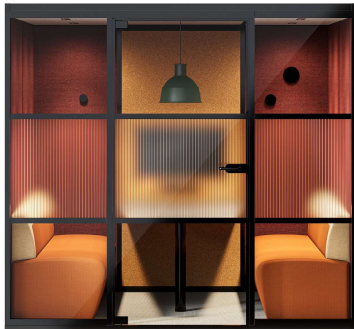
**C5**

**C3**

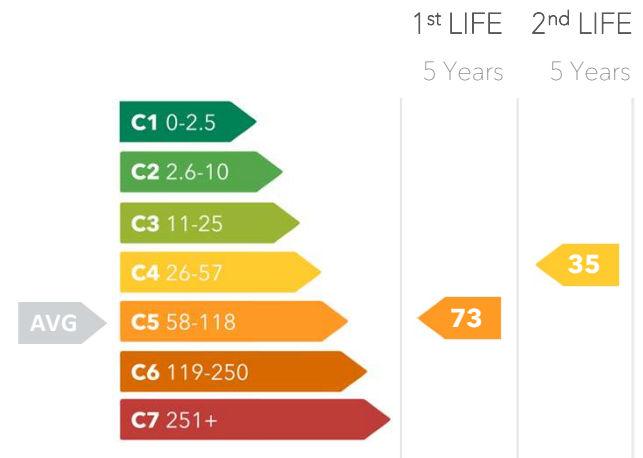


## PRODUCT PROFILE

dc Certificate	101363
Verification date	11.02.2025
Manufacturer	Boss Design
Product name	Mews Connect XL
Production no.	Mews Connect XL
Production	UK
Weight	677.52 kg



## CARBON EFFICIENCY



<b>Carbon footprint</b>	<b>2222.35 kg CO<sub>2</sub>e</b>
Life	5 years
Footprint	6.06 m <sup>2</sup>
kg CO <sub>2</sub> e/Life/m <sup>2</sup>	73.34 kg CO <sub>2</sub> e
Category	Acoustic Pod

## CARBON FOOTPRINT

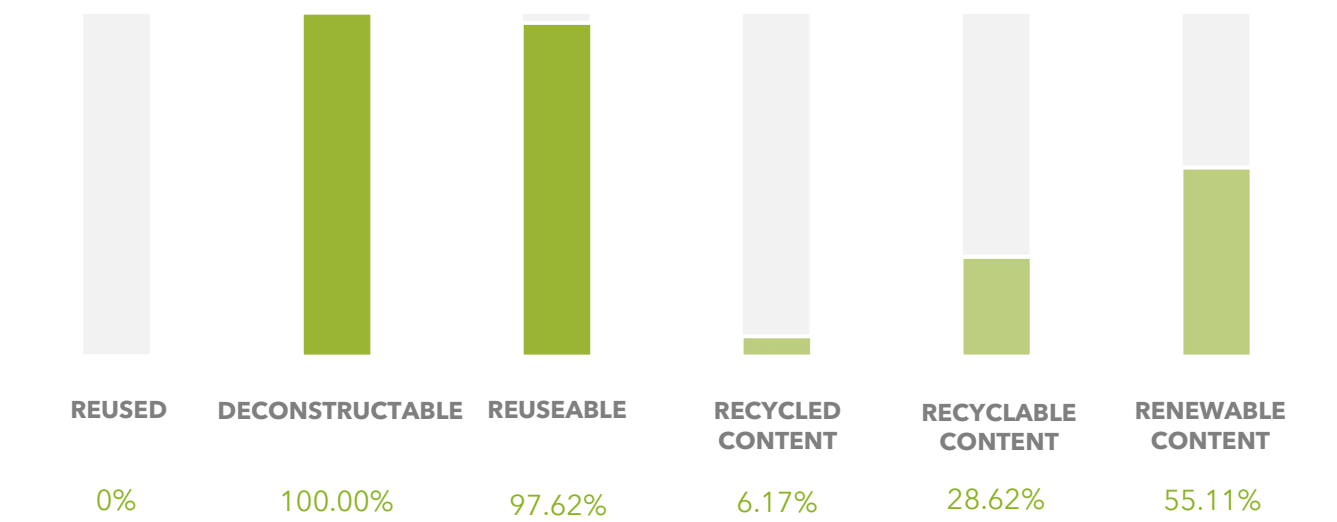
<b>Materials</b>	<b>Sourcing</b>	<b>Production</b>	<b>Distribution</b>	<b>End of Life</b>	<b>Total</b>
1781.38kg	13.26kg	34.79kg	18.29kg	384.63kg	<b>2222.35kg</b>
80.16%	0.15%	1.57%	0.82%	17.31	

## DECLARATION

This certificate represents a third-party assessment conducted per the Product Carbon Footprint assessment methodology, aligned with the Greenhouse Gas (GHG) Protocol Product Life Cycle Accounting and Reporting and ISO 14067 standards. The assessment is based upon independently published third-party data, Environmental Product Declarations and manufacturers' data for the product code listed and is valid for three years from validation. This certificate is marketed as a Circular Design Certificate and should be used to report the application of circular design application as set out in the dc Circular Design Guide. For further details and guidance on this certificate, please visit [www.designconformity.com](http://www.designconformity.com).



DESIGN CIRCULARITY - PRODUCT COMPONENTS



ENVIRONMENTAL IMPACT - MATERIALS

PRODUCT MATERIAL	WEIGHT (kg)	% OF CO <sub>2</sub> e	% OF WATER	RECYCLED CONTENT (%)	END OF LIFE ROUTE
Electronics	11.12	32	5	0	Recycle
PC Aluminium	78.42	28	1	30	Reuse
MDF	414.83	19	75	0	Reuse
PU Foam	30.52	10	5	0	Reuse
Glass	100.00	6	8	0	Reuse
Cables	5.00	2	2	0	Recycle
Grind 130 Tile	31.87	2	0	0	Reuse
Steel	9.05	1	0	56	Reuse

PACKAGING MATERIAL	WEIGHT (kg)	% OF CO <sub>2</sub> e	% OF WATER	RECYCLED CONTENT (%)	END OF LIFE ROUTE
Cardboard	5	5	3	80	Recycle
LDPE	1	1	1	0	Landfill
Pallet	12	94	96	0	Reuse

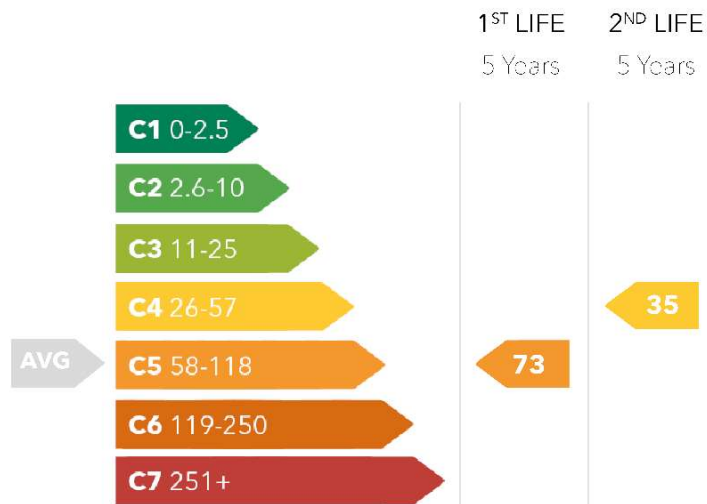


101363

## BOSS DESIGN

Mews Connect XL

### CARBON EFFICIENCY RATING



Carbon Footprint per functional unit  
**2222.35 kg CO<sub>2</sub>e**



RECYCLED CONTENT

**6%**



DECONSTRUCTABLE

**100%**



REUSABLE

**98%**



101363

2<sup>ND</sup> LIFE 1<sup>ST</sup> LIFE

**C5**

**C4**

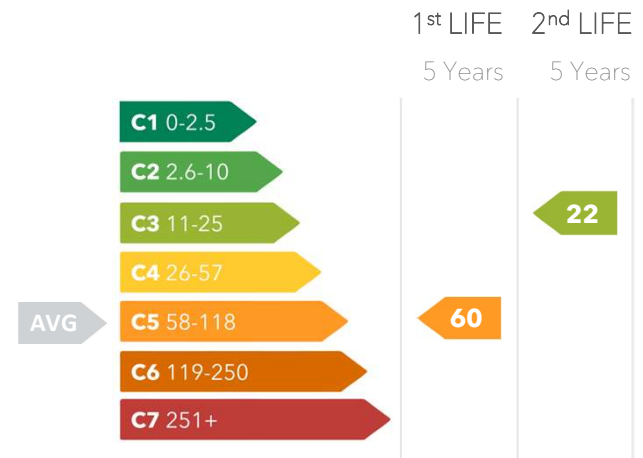


## PRODUCT PROFILE

dc Certificate	101364
Verification date	11.02.2025
Manufacturer	Boss Design
Product name	Mews Open
Production no.	Mews Open
Production	UK
Weight	275.59 kg



## CARBON EFFICIENCY



<b>Carbon footprint</b>	<b>920.34 kg CO<sub>2</sub>e</b>
Life	5 years
Footprint	3.09 m <sup>2</sup>
kg CO <sub>2</sub> e/Life/m <sup>2</sup>	59.57 kg CO <sub>2</sub> e
Category	Acoustic Pod

## CARBON FOOTPRINT

<b>Materials</b>	<b>Sourcing</b>	<b>Production</b>	<b>Distribution</b>	<b>End of Life</b>	<b>Total</b>
725.48kg	1.46kg	14.17kg	7.44kg	171.79kg	<b>920.34kg</b>
78.83%	0.16%	1.54%	0.81%	18.67	

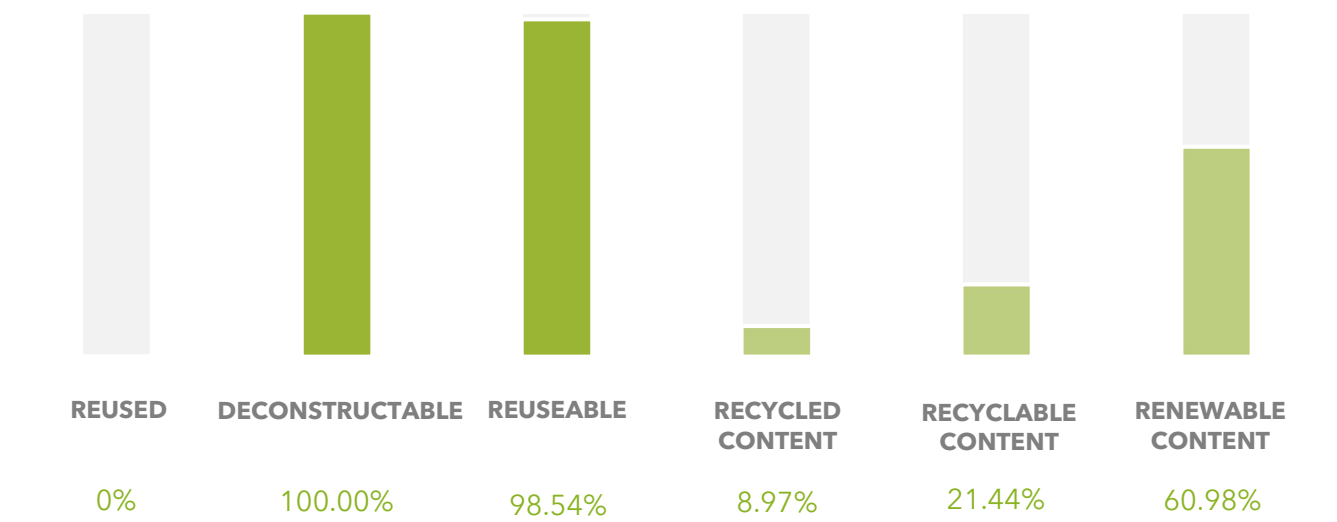
## DECLARATION

This certificate represents a third-party assessment conducted per the Product Carbon Footprint assessment methodology, aligned with the Greenhouse Gas (GHG) Protocol Product Life Cycle Accounting and Reporting and ISO 14067 standards. The assessment is based upon independently published third-party data, Environmental Product Declarations and manufacturers' data for the product code listed and is valid for three years from validation. This certificate is marketed as a Circular Design Certificate and should be used to report the application of circular design application as set out in the dc Circular Design Guide. For further details and guidance on this certificate, please visit [www.designconformity.com](http://www.designconformity.com).





DESIGN CIRCULARITY - PRODUCT COMPONENTS



ENVIRONMENTAL IMPACT - MATERIALS

PRODUCT MATERIAL	WEIGHT (kg)	% OF CO <sub>2</sub> e	% OF WATER	RECYCLED CONTENT (%)	END OF LIFE ROUTE
PC Aluminium	51.92	45	2	30	Reuse
MDF	186.72	21	87	0	Reuse
Electronics	2.34	16	3	0	Recycle
PU Foam	14.97	11	5	0	Reuse
Grind 130 Tile	10.78	2	1	0	Reuse
Cables	1.00	1	1	0	Recycle
Steel	3.19	1	0	56	Reuse
Aluminium	1.02	1	0	63	Reuse

PACKAGING MATERIAL	WEIGHT (kg)	% OF CO <sub>2</sub> e	% OF WATER	RECYCLED CONTENT (%)	END OF LIFE ROUTE
Cardboard	5	5	3	80	Recycle
LDPE	1	1	1	0	Landfill
Pallet	12	94	96	0	Reuse



101364

## BOSS DESIGN

Mews Open

### CARBON EFFICIENCY RATING



Carbon Footprint per functional unit

**920.34 kg CO<sub>2</sub>e**



RECYCLED CONTENT

**9%**



DECONSTRUCTABLE

**100%**



REUSABLE

**99%**



101364

2<sup>ND</sup> LIFE 1<sup>ST</sup> LIFE

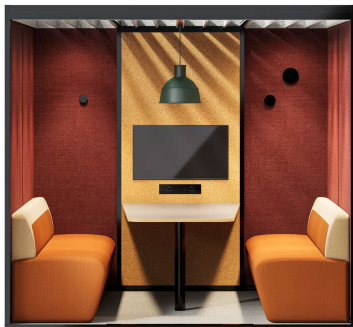
**C5**

**C3**

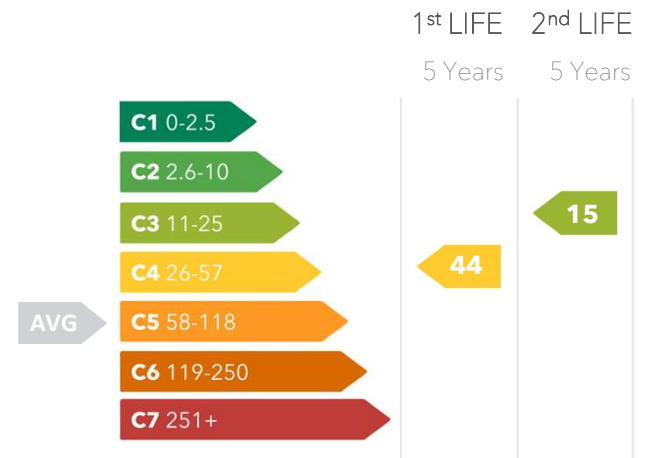


## PRODUCT PROFILE

dc Certificate	101365
Verification date	11.02.2025
Manufacturer	Boss Design
Product name	Mews Open XL
Production no.	Mews Open XL
Production	UK
Weight	428.14 kg



## CARBON EFFICIENCY



<b>Carbon footprint</b>	<b>1339.22 kg CO<sub>2</sub>e</b>
Life	5 years
Footprint	6.06 m <sup>2</sup>
kg CO <sub>2</sub> e/Life/m <sup>2</sup>	44.20 kg CO <sub>2</sub> e
Category	Acoustic Pod

## CARBON FOOTPRINT

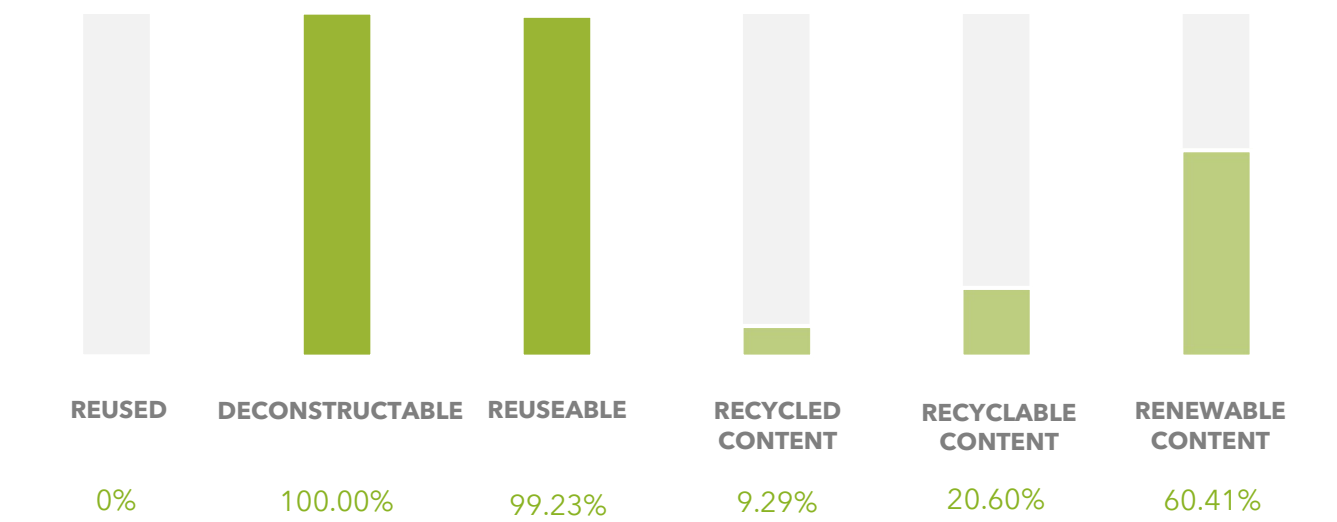
<b>Materials</b>	<b>Sourcing</b>	<b>Production</b>	<b>Distribution</b>	<b>End of Life</b>	<b>Total</b>
1038.28kg	2.55kg	22.08kg	11.56kg	264.75kg	<b>1339.22kg</b>
77.53%	0.19%	1.65%	0.86%	19.77	

## DECLARATION

This certificate represents a third-party assessment conducted per the Product Carbon Footprint assessment methodology, aligned with the Greenhouse Gas (GHG) Protocol Product Life Cycle Accounting and Reporting and ISO 14067 standards. The assessment is based upon independently published third-party data, Environmental Product Declarations and manufacturers' data for the product code listed and is valid for three years from validation. This certificate is marketed as a Circular Design Certificate and should be used to report the application of circular design application as set out in the dc Circular Design Guide. For further details and guidance on this certificate, please visit [www.designconformity.com](http://www.designconformity.com).



DESIGN CIRCULARITY - PRODUCT COMPONENTS



ENVIRONMENTAL IMPACT - MATERIALS

PRODUCT MATERIAL	WEIGHT (kg)	% OF CO <sub>2</sub> e	% OF WATER	RECYCLED CONTENT (%)	END OF LIFE ROUTE
PC Aluminium	73.24	44	2	30	Reuse
MDF	287.38	23	87	0	Reuse
PU Foam	23.30	12	5	0	Reuse
Electronics	2.34	11	2	0	Recycle
PET	11.20	3	2	0	Reuse
Grind 130 Tile	21.87	3	1	0	Reuse
Aluminium	4.08	2	0	63	Reuse
Steel	3.59	1	0	56	Reuse

PACKAGING MATERIAL	WEIGHT (kg)	% OF CO <sub>2</sub> e	% OF WATER	RECYCLED CONTENT (%)	END OF LIFE ROUTE
Cardboard	5	5	3	80	Recycle
LDPE	1	1	1	0	Landfill
Pallet	12	94	96	0	Reuse



101365

## BOSS DESIGN

Mews Open XL

### CARBON EFFICIENCY RATING



Carbon Footprint per functional unit  
**1339.22 kg CO<sub>2</sub>e**



RECYCLED CONTENT

**9%**



DECONSTRUCTABLE

**100%**



REUSABLE

**99%**



101365

2<sup>ND</sup> LIFE 1<sup>ST</sup> LIFE

**C4**

**C3**